

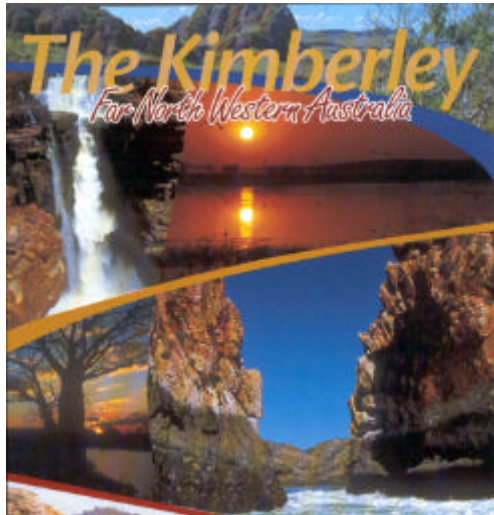
Aussie Fly-Aways



KIMBERLEY SAFARI

9th – 19th June 2011

PRELIMINARY ITINERARY



Day 1

Home Valley Station

Arrive Home Valley Station, a 615,000 acre working cattle station and tourism property. Set against the rugged beauty of the Cockburn Range it is an outback adventure playground of towering gorges, sparkling waterholes, ever-flowing rivers, untouched beaches, billabongs, waterfalls and stunning ancient landforms and ranges.

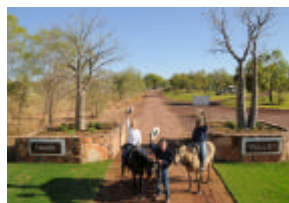


See the Cockburn Range coming alive in the fading, sunburnt colours of sundown on a sunset tour to the HV8 lookout.

Day 2

You will be able to choose from a range of activities and tours such as:

- fishing tours
- horse riding
- Station tour and Australian Movie tour



- Twitchers tour bird safari
- Bindoola Bogey Run - Come for a swim or spend an hour exploring the vast and ancient Bindoola Gorge surrounding the Bindoola Pools. This is not for the faint of heart as much rock-hopping is required, but the reward is great as you get to relax in cool, clear waters of the great Bindoola Creek.



Day 3

Kununurra



Depart Home Valley Station for Kununurra, gateway to the East Kimberley, situated on the Ord River and centre for the Ord River Irrigation Project. .
Ord River/Lake Argyle cruise.
Overnight Kununurra



Day 4

Bungle Bungles



Land Bellburn air strip. The Bungle Bungles, situated in the Purnululu National Park, is known for its scenic beehive-shaped striped stonework domes. Every corner presents us with a more stunning view of the Bungle Bungles as we walk amongst these dome formations. Our guided tour includes the huge natural amphitheatre of Cathedral Gorge, the Domes Walk, and the Piccaninny Creek.

Day 5

Mt Elizabeth

Depart Bungle Bungles for Mt Elizabeth Station, The only truly working beef cattle station in the area.



Day 6

Cape Leveque

Leaving Mt Elizabeth Station we head for Mitchell Plateau taking in the incredible spectacle of Mitchell Falls created by the Mitchell River flowing over the massive plateau into the deep pools below. We then continue our flight along the spectacular Kimberley Coast and the Buccaneer Archipelago - more than 800 islands covering an area of 50 square kilometers, a million bays and low-lying





reef. A major attraction of the Buccaneer Archipelago is the Horizontal Waterfall caused by the powerful tidal movements in the area. Massive 11 metre tides pound through the close walls between two islands at Talbot Bay, creating the impossible effect of a horizontal waterfall flowing across the face of the ocean as waters surge at a massive pace through the tight spaces between narrow island gaps; Another feature of the massive tidal flows are the stupendous whirlpools in the bays of the archipelago, an amazing sight to see.

Arrive Cape Leveque on the tip of the Dampier Peninsula, an oasis in the white sands, red earth and thick bush.

Overnight Kooljaman Wilderness Camp.

Day 7

Cape Leveque

There is beautiful swimming and snorkeling, rock pools, clear water and abundant tropical fish make this a very enjoyable activity. There are a range of walks you can do - beach walks along the Eastern and Western Beach, reef walks at low-tide and the interpretive boardwalk through the coastal vine thicket. Or just relax and maybe spot a whale just off shore.

Overnight Kooljaman Wilderness Camp.



Day 8

Mornington Wilderness Camp



Located in the heart of the Kimberley, Mornington Wildlife Sanctuary covers more than 3,000 square kilometres of spectacular gorges and tropical savannah dominated by the Fitzroy River and King Leopold Ranges. It is a naturalist's paradise, providing refuge for over 200 species of birds and a diverse range of other wildlife.

Activities include canoeing down Diamond Gorge and swimming and exploring Sir John Gorge. Before dinner, enjoy a glass of champagne as you watch the sun set over the stunning Central Kimberley ranges.

Day 9

Windjana Gorge & Tunnel Creek

Depart Mornington Wilderness Camp for Windjana Gorge, a 3.5 km gorge carved out of the Napier Range by the Lennard River. The walls on both sides are 30 to 100 metres high, and the gorge is over 100 metres wide. The most noticeable feature of Windjana Gorge is the freshwater crocodiles. There are literally dozens of them, in all sizes.





We then drive to Tunnell Creek, wading through the 750 metre long cave carved by waters running through the Napier Range is a real Kimberley adventure.

Return to Mornington Wilderness Camp for overnight.

Day 10

Broome

Depart Mornington Wilderness Camp for Broome.

With pristine white sand beaches, rolling red cliffs and endless azure waters, the pearly town of Broome is our next stop. You will have plenty of free time to either relax or explore the pearl of the North West. Several optional tours are available, from a tour of the Willie Creek Pearl Farm to camel treks. Chinatown, once a bustling hub of pearl sheds, billiard saloons, opium dens and brothels, is now home to fine pearl showrooms and an exotic blend of sidewalk cafes and restaurants serving east-meets-west cuisine. Local night markets are often held at Town Beach in Broome, where you can sample local fare, purchase crafts and see talented local entertainers perform.

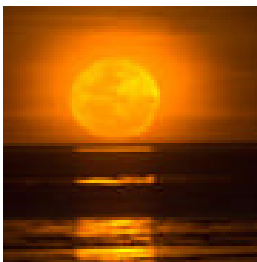
Overnight Broome.



Day 11

Broome

Experience the magnificent scenic and historic sights of the Broome town coastline with Broome Hovercraft Eco Tours. Enjoy an amphibian ride over very low water, tidal flats and sand bars, places inaccessible by other means. Stop on the tidal flats beside the Flying Boat wrecks and meander amongst them whilst learning the amazing history of their demise during the Second World War.



Farewell dinner: Overlooking the turquoise waters of Roebuck Bay and the perfect place to view the amazing tidal variations and the spectacular "Stairway to the Moon". This natural phenomenon is caused by the rising of a full moon reflecting on the exposed mudflats at extremely low tide - creating a beautiful optical illusion of a staircase reaching up to the moon.

Overnight Broome.

Day 12

Transfer to airstrip. Tour ends.

Notes:

Accommodation, tours, park entries, transfers, and most meals included.

Accommodation ranges from 4 Star to budget according to availability and location.

All dates and times are correct at the time of publication however Aussie Fly-Aways Pty Ltd reserves the right to change any dates, activities, tours, accommodation depending on availability and any unforeseen circumstances.