

# Aussie Fly-Aways



## FLYING SAFARIS

### SOUTHERN OUTBACK TOUR FOR PILOTS AND FRIENDS

MARCH 2009

#### Preliminary Itinerary

##### Day 1

Arrive **Mungo Lodge** airstrip and check in at accommodation. Relax and unwind. Overnight Mungo Lodge.



##### Day 2

Full day tour of **Mungo National Park**, the focal point of the Willandra Lakes World Heritage area and famous because the dry lakeshore contains evidence of indigenous campfires, middens and burials, dating back to nearly 50,000 years ago when the lakes were often filled with fresh water. The shoreline is also a detailed record of Australia's past climate, lake levels and the animals that used the lake. Remains of the earliest known humans to inhabit the Australian continent have been found in Mungo, dating back nearly 40,000 years. Many native animals can be found here. After the lake dried up, winds swept storms of sand up from the lake floor, dumping it on the shoreline and creating the famous Mungo lunette. This is the site of the spectacular Great Walls of China which have been carved from layers of the lunette. As the lunette erodes it reveals remains and fossils. The fragile formations of sand and clay have been shaped by wind and water and are spectacular when viewed in their entirety from the air. Overnight Mungo Lodge.



##### Day 3

Depart Mungo Lodge after breakfast and arrive **Quorn**, transfer to accommodation at the Austral Hotel/Motel, featured heavily in such films as "Gallipoli" (1980) and "Sunday too far away" (1974) with Jack Thompson. Visit the railway workshops and see the enormous collection of old engines and rolling stock being restored. Overnight Quorn.

##### Day 4

After a leisurely breakfast stroll to Quorn railway station in the centre of town to board the Pichi Richi Explorer. Experience train travel as it was 100 years ago. The South Australian timber bodied carriages - up to 115 years old, were used on narrow gauge trains such as the *Great Northern Express*, services in the South East of SA, the *Ghan* and the *East-West Express*. Overnight Quorn.

##### Day 5

##### Woomera

After breakfast transfer to airstrip for short flight to **Woomera**. 9.30am guided tour of Woomera including a lap of the Woomera Village, with a run down of what was? What is? And hopefully what's going to be? We will hear a fascinating history about Woomeras' history as we head for the range head where we visit IB Building & Launches R1 & 2 including Len Bedall's Memorial and the remains of Launcher 6A.

1.00pm return to Woomera Village. Lunch at your leisure and visit the Woomera Heritage Museum and discover the pivotal role Woomera

plays in the past, present and future history of Australia. The Heritage Museum contains historical displays relating to the Woomera Range and to the closed Joint Defence Facility at Nurrungar. The displays contain an extensive range of rocket parts



along with photographs and descriptions of Range activities, including the most recent NEXST-1 and HyShot trials. A video is also shown in the museum recounting significant events in Woomera's history.

Overnight Woomera

## Day 6

### Coober Pedy

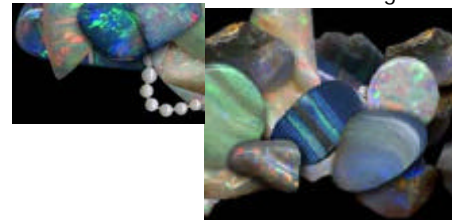
Depart Woomera after breakfast. If it can be arranged, those who wish can fly to Maralinga, site of the Abomb experiments.



We arrive at our next stop, Coober Pedy, where 85% of the world's opals are mined.

12.30pm pick up for 1.00pm tour of Crocodile Harry's opal mine and underground home, The Breakaways and Moon Plain, The Dog Fence, Catacomb church, Coober Pedy Desert Golf Course, Underground Potteries, Opal Fields, fossicking for opal in the fields and an underground opal display.

Overnight Coober Pedy.



## Day 7

Depart Coober Pedy after breakfast. Our flight today takes us over the Breakaways, once part of The Flinders Ranges, broken away by the inland sea that used to cover this area between 60 -120 million years ago. Dozens of movies have been shot here including "Mad Max III" "Priscilla Queen of the Desert" "Ground Zero" "Salute of the Jugger" to name just a few. If desired, refuel at Oodnadatta and refresh with a drink or snacks at the famous Pink Roadhouse. Fly over Lake Eyre, at 144 km long and 77 km wide, the saltiest lake in the world with the surface of salt crust covering 9323 square kilometres. British speed ace Donald Campbell set a land speed record of 403.1 miles per hour on the lake in 1964.



Arrive and overnight at the tiny outback settlement of **Innamincka** on the famous Cooper Creek in the Strzelecki Desert. To the north lies the vast Innamincka Station which was established in 1872 and once owned by the cattle baron Sidney Kidman, it covers 13,817 sq km while, to the south, is Gidgealpa Station, covering 4900 sq km. Also in the area, vast underground gas fields have been discovered

accounting for 80 per cent of South Australia's electricity requirements.

## Day 8

### Dig Tree / Tibooburra

Depart Innamincka for '**Dig**' tree, the tree marking the location of buried supplies at the depot camp left by the depot party after waiting for 4 months for the return of the hapless explorers Burke and Wills. It was the cruelest irony of the whole ill-fated Burke and Wills expedition that the camp was abandoned by William Brahe and the support team only 7 hours before the arrival of Burke and Wills. The Burke and Wills "Dig Tree" is an enduring reminder of Australian pioneering spirit. It is believed that the Coolibah tree is 200 ~ 250 years old. Burke's face was carved into another tree (the "face tree") about 30m downstream of the "Dig Tree" by John Dickens in 1898 and is still clearly visible.



Depart Dig Tree, arrive **Tibooburra**, Known as the hottest and most isolated outback town in New South Wales, the name Tibooburra is thought to mean 'heaps of rocks' in the language of the local Aborigines, presumably a reference to the granite outcrops near the town which are regarded as sacred sites of special mythological and spiritual significance. Places of interest include the Tibooburra Outback School of the Air and Tibooburra Keeping Place, and Pioneer Park. Have a drink at The Family Hotel where a few decades ago artists, fascinated by the desert, came to the town to paint. They seem to have felt that any flat surface was worthy of their daubings because there are still original works by Clifton Pugh, Russell Drysdale and Rick Amor on the walls of the pub.

Farewell Dinner

## Day 9

Tour ends

Notes:

Accommodation, tours, park entries, transfers, and most meals included.

Accommodation ranges from 4 Star to budget according to availability and location.

All dates and times are correct at the time of publication however Aussie Fly-Aways Pty Ltd reserves the right to change any dates, activities, tours, accommodation depending on availability and any unforeseen circumstances.